

# \$3,200,000 - 685 Shunpike Rd, Chatham Twp.

MLS® #3893355

**\$3,200,000**

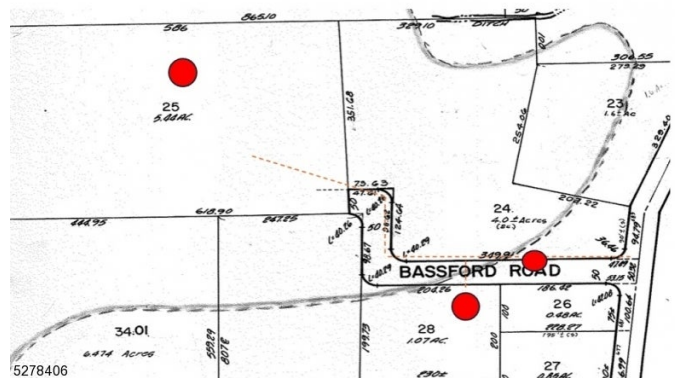
Bedroom, Bathroom,  
Land on 5 Acres

GREEN VILLAGE, Chatham Twp., NJ

Fabulous opportunity to own a beautiful, level 7 acre parcel of land in the bucolic Green Village section of Chatham Township. Quiet, picturesque setting adjacent to Green Acres and minutes to hiking/biking trails and Loantaka recreation area, yet close to shopping and short drive to NJ Transit. Tremendous potential! Ideal for "gentleman's farm"--live on 1 acre and farm 5 acres to benefit from farm assessed reduced property taxes! Also great subdivision potential for new homes. Well built, all brick ranch on 1 acre with great expansion potential plus 5.44 level, open land with treed border being sold as a package. 50' wide partially paved roadway (Bassford Road) is approximately 1/2 acre and provides access to 1 acre lot on left and 5.44 acre parcel straight ahead. Public water, sewer, and gas in street. UST removed, DEP NFA letter on file. FEMA LOMA letter NOT FLOOD ZONE. Seller will accept offer with 30-45 day due diligence period. Buyers MUST be accompanied to walk the property, proceed with caution while walking property. Please park in driveway. DO NOT drive or park vehicles on land. PROPERTY BEING SOLD STRICTLY AS IS in condition that it is viewed. Sold as a package with MLS 3893351.P



5278406



5278406



5278406

## Essential Information

MLS® #	3893355
Price	\$3,200,000

Acres	5.44
Type	Land
Status	Active

### Community Information

Address	685 Shunpike Rd
Subdivision	GREEN VILLAGE
City	Chatham Twp.
County	Morris
State	NJ
Zip Code	07935

### Exterior

Lot Description	Level Lot, Backs to Park Land, Irregular Lot, Open Lot, Possible Subdivision
-----------------	--

### Additional Information

Date Listed	March 29th, 2024
Days on Market	51
HOA Fees	0.00

### Listing Details

## RE/MAX PREMIER

The data relating to real estate for sale on this website comes in part from the IDX Program of Garden State Multiple Listing Service, L.L.C. Real estate listings held by other brokerage firms are marked as IDX Listing. Information deemed reliable but not guaranteed. Copyright © 2024 Garden State Multiple Listing Service, L.L.C. All rights reserved. Notice: The dissemination of listings on this website does not constitute the consent required by N.J.A.C. 11:5.6.1 (n) for the advertisement of listings exclusively for sale by another broker. Any such consent must be obtained in writing from the listing broker. This information is being provided for Consumers' personal, non-commercial use and may not be used for any purpose other than to identify prospective properties Consumers may be interested in purchasing. Listing information last updated on May 19th, 2024 at 11:03am EDT