

# \$625,000 - 140 Kings Hwy, Washington Twp.

MLS® #3897951

## \$625,000

4 Bedroom, 3.00 Bathroom,  
Residential on 3 Acres

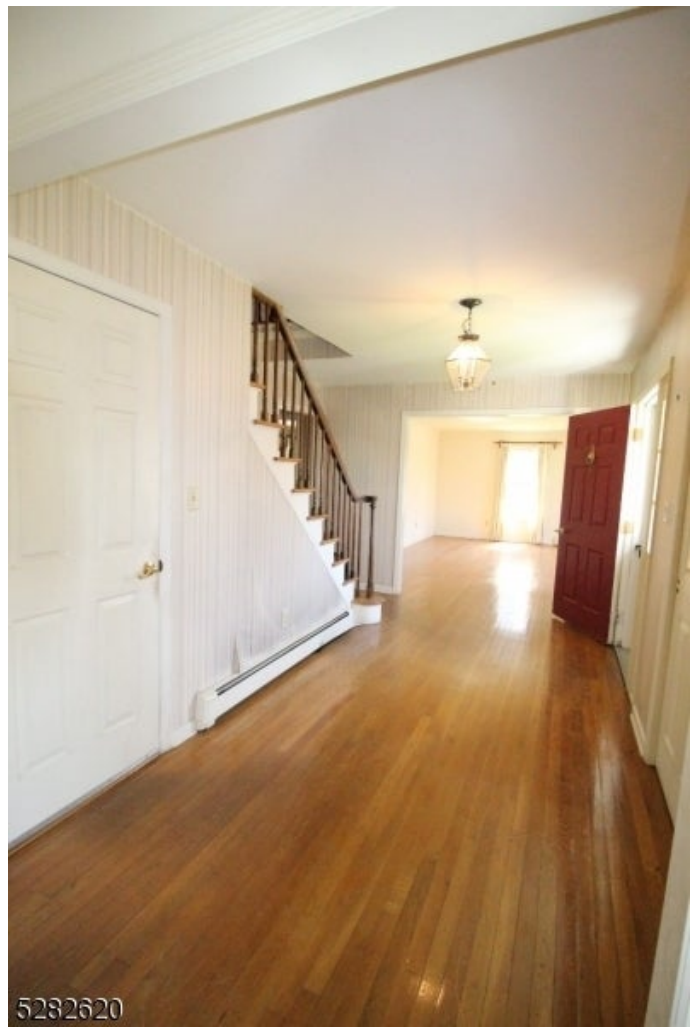
N/A, Washington Twp., NJ

Country colonial on 3+acres in highly much desired Long Valley! 4BR, 2 1/2 bath, Central Air, hardwood floor. Family Room w/ masonry wall to ceiling brick fireplace with custom hearth and mantle, directional lighting & Anderson Slider door to deck. Eat-In country kitchen with wood floor, ceiling fan, SS Sink with goose neck faucet, and side spray. Kitchen has genuine wood cabinets, recipe desk, ceiling fans, large pantry loaded with storage. Spacious Living Room with hardwood floor. Formal Dining Room. Primary suite with WIC and full bath with adjoining bedroom suitable for nursery, den, sitting room. Two additional bedrooms with large WIC. Privacy and Nature Abound!!! Garden Shed. 2 car garage. House has great bones, just needs a new owners TLC. Highly accredited schools, competitive taxes, convenient to hospital, airport, train, park & ride, major roadways, stores, shoppes, fine dining, fast food, stocked waters, parks & trails. A rare opportunity in this highly competitive real estate market.

Built in 1978

## Essential Information

MLS® #	3897951
Price	\$625,000
Bedrooms	4
Bathrooms	3.00
Full Baths	2



Half Baths	1
Acres	3.10
Year Built	1978
Type	Residential
Sub-Type	Single Family
Style	Colonial
Status	Active

### Community Information

Address	140 Kings Hwy
Subdivision	N/A
City	Washington Twp.
County	Morris
State	NJ
Zip Code	07853-3429

### Amenities

Utilities	See Remarks
Parking	1 Car Width, Gravel
# of Garages	2
Garages	Built-In Garage

### Interior

Interior	Carbon Monoxide Detector, Fire Extinguisher, Smoke Detector, Walk-In Closet
Appliances	Dishwasher, Refrigerator, Dryer, Range/Oven-Electric, Washer
Heating	Oil Tank Above Ground - Inside
Cooling	Central Air
Has Basement	Yes
Basement	Partial, Unfinished
Fireplace	Yes
# of Fireplaces	1
Fireplaces	Family Room

### Exterior

Exterior	Vinyl Siding, Wood Shingle
Exterior Features	Deck
Roof	Asphalt Shingle

### School Information

Elementary	Flocktown
Middle	Long Valle
High	W.M. Centr

**Additional Information**

Date Listed	April 24th, 2024
Days on Market	24
HOA Fees	0.00

**Listing Details**

**WEICHERT REALTORS**

The data relating to real estate for sale on this website comes in part from the IDX Program of Garden State Multiple Listing Service, L.L.C. Real estate listings held by other brokerage firms are marked as IDX Listing. Information deemed reliable but not guaranteed. Copyright © 2024 Garden State Multiple Listing Service, L.L.C. All rights reserved. Notice: The dissemination of listings on this website does not constitute the consent required by N.J.A.C. 11:5.6.1 (n) for the advertisement of listings exclusively for sale by another broker. Any such consent must be obtained in writing from the listing broker. This information is being provided for Consumers' personal, non-commercial use and may not be used for any purpose other than to identify prospective properties Consumers may be interested in purchasing.  
Listing information last updated on May 18th, 2024 at 9:18am EDT